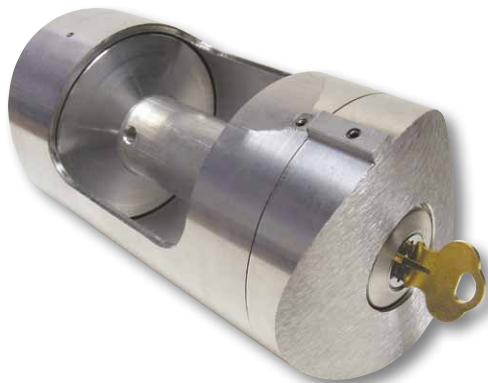


INTERNAL HALYARD PARTS & ACCESSORIES

"M" - WINCHES

Standard finishes available: Satin, Clear, Bronze #313, White, Black



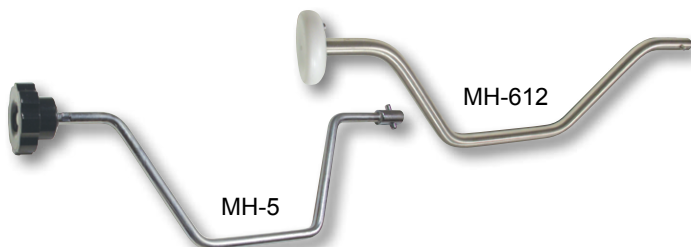
The maintenance-free "M" - Winch is gearless and self-locking at any point, eliminating the need for a separate brake. This direct drive winch provides rapid raising and lowering of the flag with little effort. The design does not require any welding, thus avoiding discoloration when an anodized finish is desired. No monthly lubrication is needed. This winch system can be easily adapted to existing on-site flag-poles. The winch is inserted into the pole and secured with a stainless steel bolt on the back side of the pole. Other sizes available upon request.



MODEL	FITS POLE DIA.	LBS.	SATIN			CLEAR			BRONZE #313			WHITE			BLACK		
			ITEM #	1-5	6+	ITEM #	1-5	6+	ITEM #	1-5	6+	ITEM #	1-5	6+	ITEM #	1-5	6+
M-5	5" w/.125 WALL	1.3	360000	\$470	\$450	360009	\$500	\$470	360018	\$500	\$470	360027	\$500	\$470	360036	\$500	\$470
M-5	5" w/.156 WALL	1.3	360344	470	450	360345	500	470	360346	500	470	360347	500	470	360348	500	470
M-6	6"	2.1	360001	740	680	360010	770	720	360019	770	720	360028	770	720	360037	770	720
M-6H	6" w/.250 WALL	2.1	360501	740	680	360502	770	720	360503	770	720	360505	770	720	360504	770	720
M-7	7"	2.3	360002	740	680	360011	770	720	360020	770	720	360029	770	720	360038	770	720
M-8	8"	4.5	360003	830	750	360012	880	820	360021	880	820	360030	880	820	360039	880	820
M-10	10"	4.9	360004	880	820	360013	910	850	360022	910	850	360031	910	850	360040	910	850
M-1034	10-3/4"	5.1	360005	1,000	960	360014	1,050	1,010	360023	1,050	1,010	360032	1,050	1,010	360041	1,050	1,010
M-12	12" w/.250 WALL	5.0	360466	1,000	960	360467	1,050	1,010	360468	1,050	1,010	360469	1,050	1,010	360470	1,050	1,010
M-12	12" w/.375 WALL	5.0	360006	1,000	960	360015	1,050	1,010	360024	1,050	1,010	360033	1,050	1,010	360042	1,050	1,010
M-1234	12-3/4"	7.9	360007	2,050	1,920	360016	2,100	1,950	360025	2,100	1,950	360034	2,100	1,950	360043	2,100	1,950
M-14	14"	8.1	360008	2,050	1,920	360017	2,100	1,950	360026	2,100	1,950	360035	2,100	1,950	360044	2,100	1,950

"M"-Winches can be mixed to achieve the higher quantity pricing.

"M" - WINCH HANDLES



MODEL	ITEM #	FOR "M"-WINCH MODEL #	1-5	6+	LBS.
MH-5	360045	M-5	\$57.00	\$52.00	.50
MH-612	360046	M-6 THRU M-14	120.00	112.00	1.1

Winch Handles on this page can be mixed to achieve the higher quantity pricing.

LOCKS & KEYS FOR "M"- WINCHES



MODEL	ITEM #	DESCRIPTION	1-5	6+	LBS.
M-L	360054	LOCK w/KEY	\$72.00	\$68.00	.08
M-K	360055	KEY ONLY*	10.10	9.60	.01

*Please provide number located on cylinder lock when ordering replacement keys.

If medium bronze #312, light bronze #311 or a custom color is desired please specify when ordering.